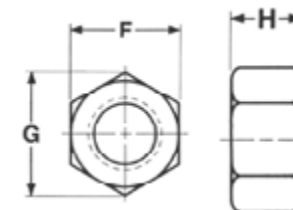




NUTS

HEAVY HEX NUTS

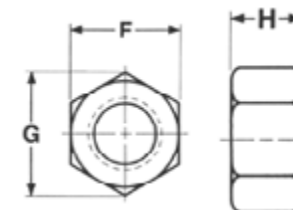


Nominal Size or Basic Major Dia. of Thread		F			G		H		
		Width Across Flats			Width Across Corners		Thickness Heavy Hex Nuts		
		Basic	Max.	Min.	Max.	Min.	Basic	Max.	Min.
1/4	0,250	1/2	0,500	0,488	0,577	0,556	15/64	0,250	0,218
5/16	0,313	9/16	0,562	0,546	0,650	0,622	19/64	0,314	0,280
3/8	0,375	11/16	0,688	0,669	0,794	0,763	23/64	0,377	0,341
7/16	0,438	3/4	0,750	0,728	0,866	0,830	27/64	0,441	0,403
1/2	0,500	7/8	0,875	0,850	1,010	0,969	31/64	0,504	0,464
9/16	0,563	15/16	0,938	0,909	1,083	1,037	35/64	0,568	0,526
5/8	0,625	1-1/16	1,062	1,031	1,227	1,175	39/64	0,631	0,587
3/4	0,750	1-1/4	1,250	1,212	1,443	1,382	47/64	0,758	0,710
7/8	0,875	1-7/16	1,438	1,394	1,660	1,589	55/64	0,885	0,833
1	1,000	1-5/8	1,625	1,575	1,876	1,796	63/64	1,012	0,956
1-1/8	1,125	1-13/16	1,812	1,756	2,093	2,002	1-7/64	1,139	1,079
1-1/4	1,250	2	2,000	1,938	2,309	2,209	1-7/32	1,251	1,187
1-3/8	1,375	2-3/16	2,188	2,119	2,526	2,416	1-11/32	1,378	1,310



NUTS

HEAVY HEX NUTS



Nominal Size or Basic Major Dia. of Thread		F			G		H		
		Width Across Flats			Width Across Corners		Thickness Heavy Hex Nuts		
		Basic	Max.	Min.	Max.	Min.	Basic	Max.	Min.
1-1/2	1,500	2-3/8	2,375	2,300	2,742	2,622	1-15/32	1,505	1,433
1-5/8	1,625	2-9/16	2,562	2,481	2,959	2,828	1-19/32	1,632	1,556
1-3/4	1,750	2-3/4	2,750	2,662	3,175	3,035	1-23/32	1,759	1,679
1-7/8	1,875	2-15/16	2,938	2,844	3,392	3,242	1-27/32	1,886	1,802
2	2,000	3-1/8	3,125	3,025	3,608	3,449	1-31/32	2,013	1,925
2-1/4	2,250	3-1/2	3,500	3,388	4,041	3,862	2-13/64	2,251	2,155
2-1/2	2,500	3-7/8	3,875	3,750	4,474	4,275	2-29/64	2,505	2,401
2-3/4	2,750	4-1/4	4,250	4,112	4,907	4,688	2-45/64	2,759	2,647
3	3,000	4-5/8	4,625	4,475	5,340	5,102	2-61/64	3,013	2,893
3-1/4	3,250	5	5,000	4,838	5,774	5,515	3-3/16	3,252	3,124
3-1/2	3,500	5-3/8	5,375	5,200	6,207	5,928	3-7/16	3,506	3,370
3-3/4	3,750	5-3/4	5,750	5,562	6,640	6,341	3-11/16	3,760	3,616
4	4,000	6-1/8	6,125	5,925	7,073	6,755	3-15/16	4,014	3,862